



## Installation Instructions: Lube Minder® Automatic Chain Oiler: 170-0597



### WARNING

Read all instructions carefully before installation. Retain instructions for future use. Do not attempt to service any machine without exercising the mandatory shut down procedure as described in the operators manual.

### TOOLS REQUIRED

1. Electric Drill
2. 7/32" Diameter Drill Bit (included in kit)
3. 13/32" Diameter Drill Bit
4. 3/8" Diameter Drill Bit
5. Adjustable or SAE Wrenches
6. Pliers
7. Standard Screwdrivers
8. Square File

### HOW THE LUBE MINDER WORKS

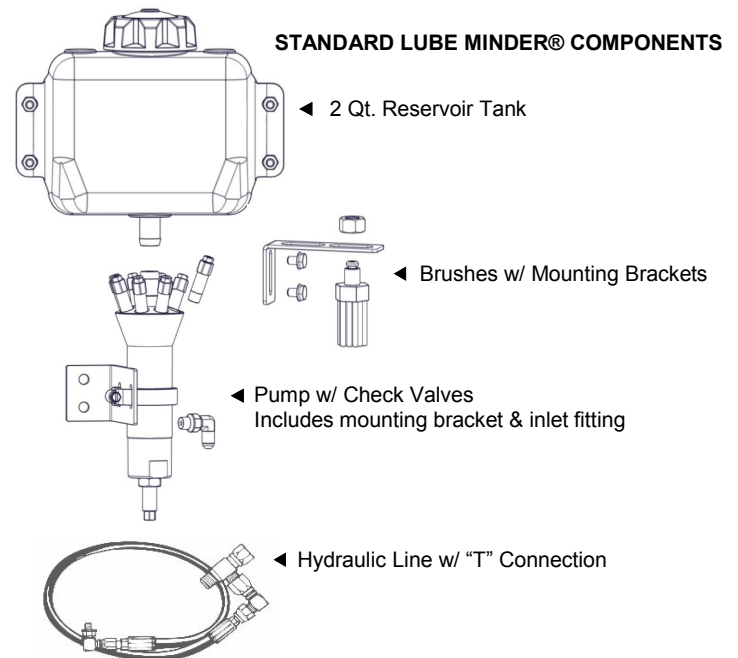
Proper lubrication of chains and sprockets will dramatically increase the life of your equipment and provide peace-of-mind performance during critical harvest periods.

The Lube Minder® system automatically oils each chain and sprocket while they are warm and running, per manufacturer recommendation. This allows lubrication to penetrate into the pin and bushing joints eliminating the need for manual maintenance.

The pump cycles by tying into a double-acting hydraulic cylinder on the baler. As the hydraulic fluid becomes pressurized the piston inside the pump moves up and dispenses the desired amount of oil to the chains and sprockets. The pump is fully adjustable allowing for proper lubrication regardless of the crop of climate.

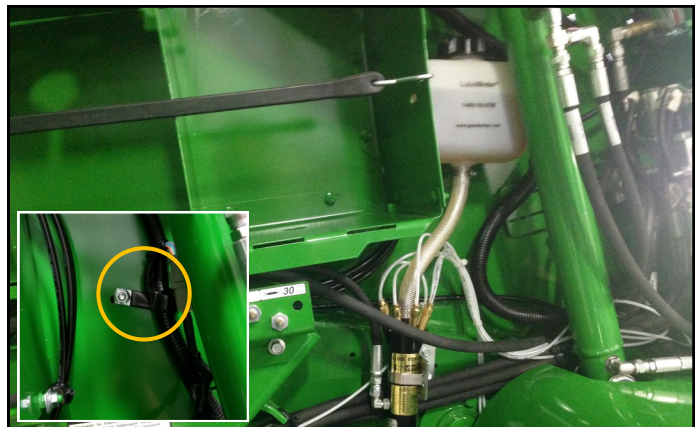
### HOW TO ADJUST THE LUBEMINDER OILER OUTPUT

The Lube Minder® is set at the factory to deliver the maximum amount of oil per cycle. If less is desired, loosen the jam nut at the bottom of the pump and screw in the brass plunger approximately five turns. The pump can be shut off by adjusting the brass plunger until fully seated.

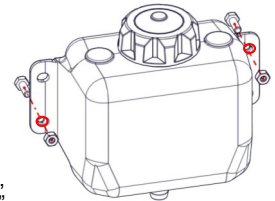


IMPORTANT: Components shown here may vary slightly depending on the make and model of equipment being lubricated. Refer to detailed installation instructions for more details.

### INSTALLING THE LUBE MINDER

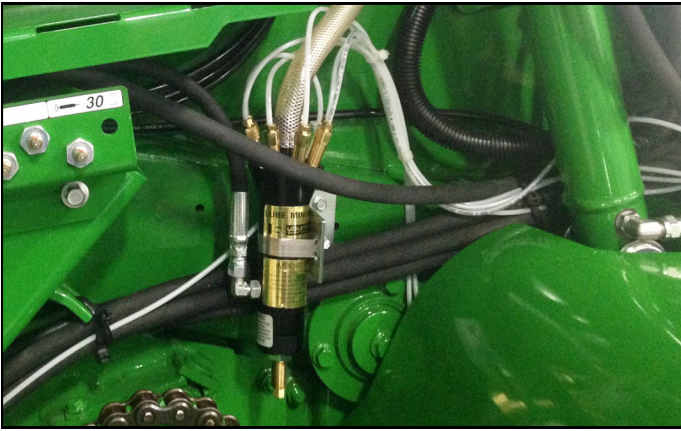


1. Begin by mounting reservoir tank to right side of baler. Remove "P" clamp and wire harness shown above. Retain carriage bolt for use when mounting reservoir tank. Temporarily remove grease line "P" clamp while installing tank.
2. Using the reservoir tank as a template, mark and drill the upper-right with 13/32" drill bit and lower left-hand corner with 3/8" drill bit.
3. Using a file, square out the upper-right hole so that the carriage bolt sits flush while securing tank and wire harness to baler using the carriage bolt removed in step 1.
4. Using a file, square out lower left hole so that the provided carriage bolt sits flush when holding tank. Reattach grease line "P" clamp and grease lines.
5. Attach the 5/8" ID hose to the bottom of the oil reservoir tank. Slide both hose clamps over each end of the hose and secure the hose to the reservoir tank.

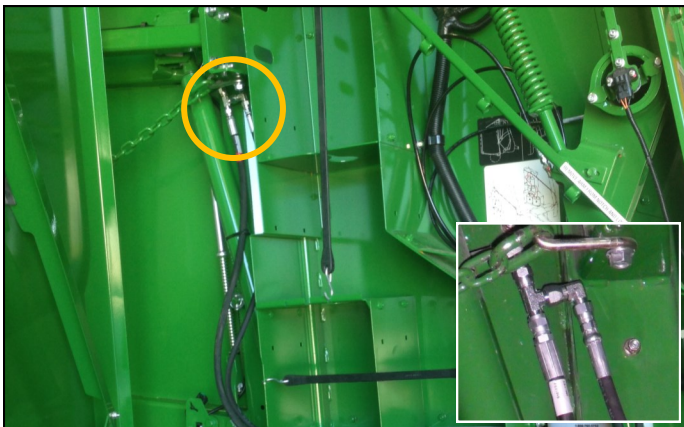
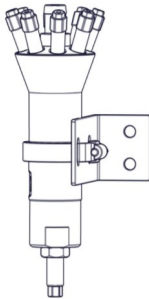




## INSTALLING THE LUBE MINDER *cont.*

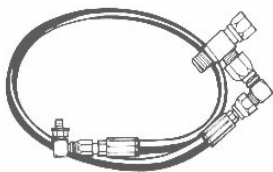


6. Attach the Lube Minder® pump to the mounting bracket using the supplied band clamp.
7. Now that the pump is attached to the mounting bracket, position the bracket as shown in the picture above. Mark and drill two 7/32" holes. Secure the pump and bracket to the baler using the supplied self-tapping screws.
8. To assist in priming the pump, pour approximately 1/8 cup of clean 30 weight oil into the reservoir tank. This will provide enough time for the oil to run down into the pump and allow air to escape.  
**Do not fill the tank all the way at this point.**



### CAUTION:

Verify all gates, cylinders, doors, booms, etc. do not hold pressure on hydraulic lines. In order to actuate, the pump requires a double acting hydraulic cylinder with a working pressure of 300 psi.

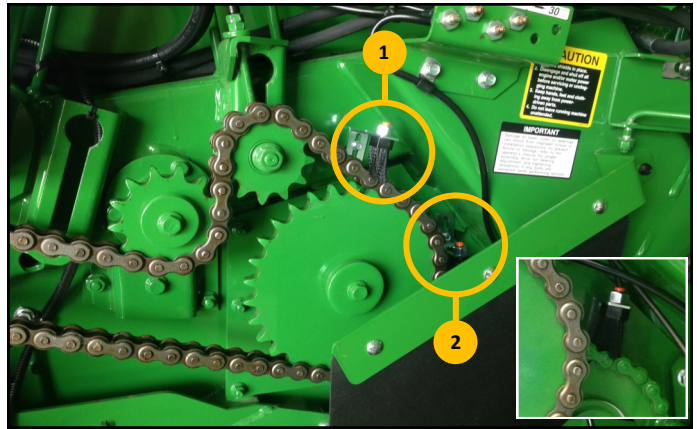


9. Disconnect the fitting on the rod end of the bale ejection cylinder located on the right side of the baler. Reinstall the "T" and elbow fittings and route the hydraulic hose to the Lube Minder® pump. Connect the end of the hose to the side of pump. NOTE: If operating with a lower pressure tractor (generally 2005 and older), remove orifice restrictor located in elbow fitting. To remove restrictor, hold elbow fitting with a 7/16" wrench and turn restrictor orifice counterclockwise using a 3/32" hex key wrench.
10. Use the following images to install the 7 brushes and brackets included with the oiling system. Attach brushes to brackets using the 1/2-20 nuts. Brushes should only be attached finger tight at this point as some slight adjustment may be needed. Brackets are specific to each chain and should be used as a template to mark and drill holes.

## MOUNTING THE BRUSHES

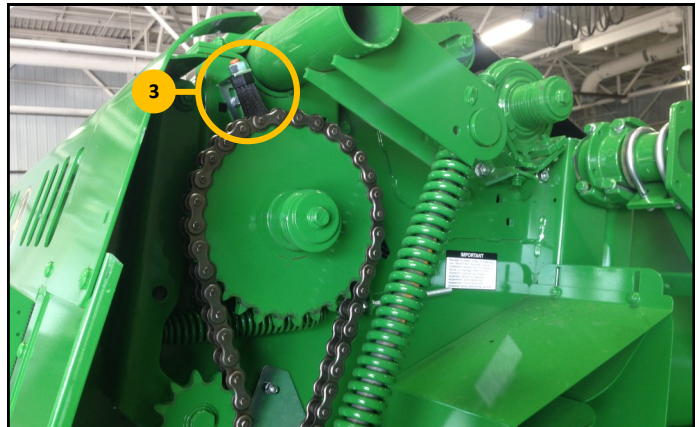
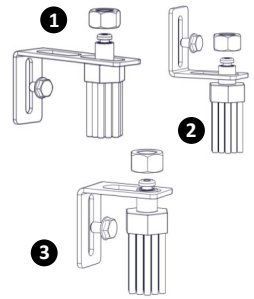
1. Refer to the following images in order to install brushes. Drill 7/32" holes and attach brush and bracket with self tapping screws. Once installed, snug up 1/2" nuts on brushes. Be careful not to overtighten brushes as this may cause damage to threads.

## MOUNTING THE BRUSHES *cont.*

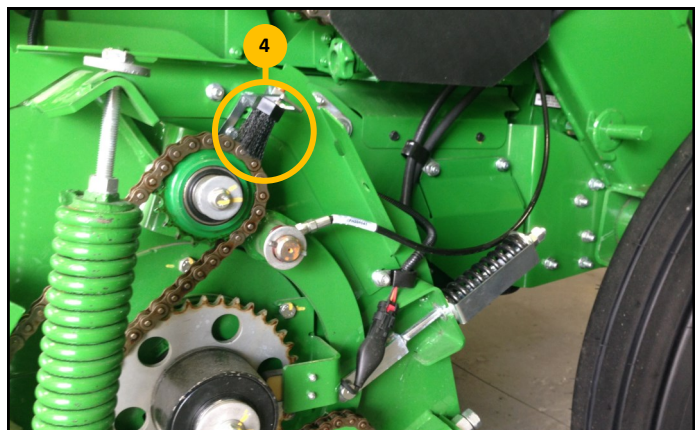
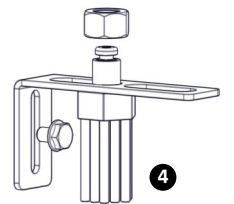


### LEFT SIDE OF BALER

2. Remove the chain shield located on the left side of the baler. Using one short and one long angle bracket, install brushes as shown. Use self tapping screws to secure brackets to baler.  
**Do not replace chain guard at this time.**
3. Using a short angle bracket, install brush as shown below. Use the supplied self tapping screws to secure bracket to the baler.



4. Remove chain guard located on the left side of baler. Use a long angle bracket to install brush. Brush should be placed in first slot of bracket as shown below. Use the supplied self tapping screws to secure bracket to the baler. This completes brush installation on the left side of the baler.  
**Do not replace chain shield at this time.**





## MOUNTING THE BRUSHES *cont.*

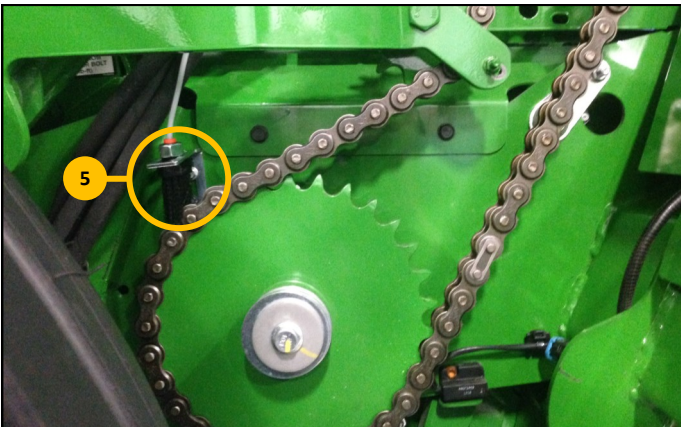
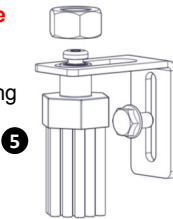


### RIGHT SIDE OF BALER

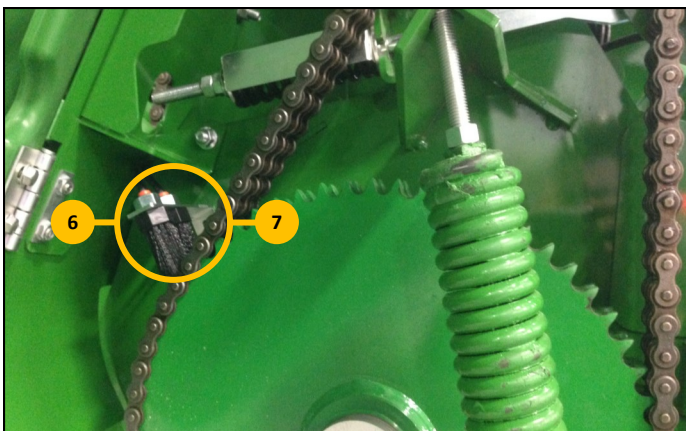
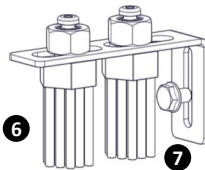
**It is not recommended that the clutch chain and sprocket receive oil automatically. For this reason, the required components have not been included in the Lube Minder Automatic Oiling Kit.**

Move to the right side of the baler to install the remaining three brushes.

5. Using a short angle bracket, install brush 5 on right side of the baler as shown above. Use the supplied self tapping screws to secure the bracket to the baler.



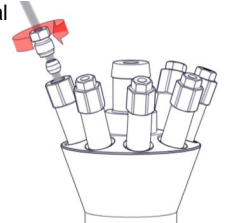
6. Remove the plastic chain guard located on the right side of the baler. Using a long angle bracket, install two brushes as shown in the picture below.  
**Do not replace chain shield at this time.**



## RUNNING THE LINES



1. Beginning with brushes furthest from pump, run clear nylon tubing from brush to pump. Insert tubing in push-to-connect fitting on brush until firmly seated. To release tubing push down on orange ring.
2. Black protective tubing is provided to protect oil lines from moving parts. Use the "P" clamps to secure lines away from obstruction.
3. Route lines tight with existing hydraulic & electrical lines. Keep clear of moving parts. Use provided zip ties to hold lines in place.
4. Use diagram on right to attach oil lines to pump manifolds. There is one manifold for each brush.
5. Begin by sliding nut & ferrule onto tubing. Push tubing down into manifold. Verify tubing has bottomed out & is properly seated. Use a 5/16" wrench to tighten nut & ferrule into manifold.



7. Finish filling the tank with clean 30 weight oil. Lube Minder is set from the factory to deliver the maximum amount of oil per cycle. If less is desired, loosen nut at bottom of pump and screw in brass plunger until desired amount is dispersed. Verify all brackets & fittings are tight. Replace guards removed during installation.

